



City of Elko Clerk's Department
1751 College Avenue
Elko, NV 89801
(775) 777-7126
FAX (775) 777-7129

ADDENDUM NUMBER TWO

ELKO SPORTS COMPLEX - PHASE 1

Please confirm receipt of ADDENDUM NUMBER TWO AND FAX BACK TO (775) 777-7129 or email to cityclerk@elkocity.nv.gov.

RECEIVED:

SIGNATURE

COMPANY NAME

Dated this 29th day of March, 2018.

Elko City Clerk

Shanell Owen, MMC

***** PLEASE NOTE RECEIPT OF ADDENDUM NUMBER TWO ON
APPLICABLE LINE ON SUBMITTED BID PROPOSAL *****



**CITY OF ELKO
ENGINEERING DEPARTMENT
1755 COLLEGE AVENUE
ELKO, NEVADA 89801
(775)777-7210
(775)777-7219 FAX**

**ADDENDUM #2
ELKO SPORTS COMPLEX – PHASE 1**

PWP# EL-2018-059

March 29, 2018

This addendum addresses additions, changes, and clarifications to the Contract Documents and Contract Drawings for the City of Elko, Sports Complex - Phase 1.

CHANGES:

1– Due to a grading conflict, all of the parking lot lighting has been removed from this phase of the project. The Attached bid form has been modified to reflect this change. Bid item #8 was P-2 lighting, and is now just the 2 conduit runs with pull strings, and 1 N-9 pull box as shown on the attached display, for all of the future parking lot lighting. Items #9 and #10 for P-1 and R-1 lighting have been removed from this phase. Bid item #12, R-1 Roadway Lighting (Pole Base Only) remains in the bid form and is for the future lighting along the future roadway that will run along the southerly side of field #1.

2 – Bid item #59 has been added for the 5' x 5' drainage structure as shown on sheet C-10 and detail #4 on Sheet C-24.

3 – The irrigation controller shall be included in bid item #20, Mainline Installation. It shall be purchased by the contractor, and handed to the City. It cannot be installed as part of this phase, because the building in which it will be located will not be built with this phase. Final testing of the irrigation system will be done by the City within the one-year warranty period. The word "controller" has been added to item #20 on the attached bid form.

CLARIFICATIONS

1 – The conduit pit shall be a minimum of 4'x4'x4' as indicated by the given requirements. It may be larger as necessary to accommodate all of the conduit runs. It does not require a precast box. The City of Elko will provide a steel plate to cover it for the short duration until the building construction begins.

2 – Because there will not be any power to the project this year, the pump testing will need to be done by generator. The pump shall then be connected to the power feed that will later feed from the future building.

U:\Parks\Sports Complex\Bid Documents\Second bid\Addendum #2\addendum2-memo.docx
Created by Bob Thibault

3 – Irrigation water will freely flow through the pump without electricity. The system is expected to have 75 psi of pressure without the pump. Temporary irrigation will be done with battery-operated timers supplied by the city to irrigate the playing fields and other necessary areas. Valves may be opened and closed manually for testing of any irrigation system. The contractor will be responsible for Fall winterization and Spring start-up of the system throughout the duration of the contract and warranty period that last for one year from the date of substantial completion.

4 – To receive Preferential Bidder Status, your bid must include a copy of your preferential bidder status certificate from the state, **AND** the Affidavit located near the end of the bid specifications as **Exhibit 18**.

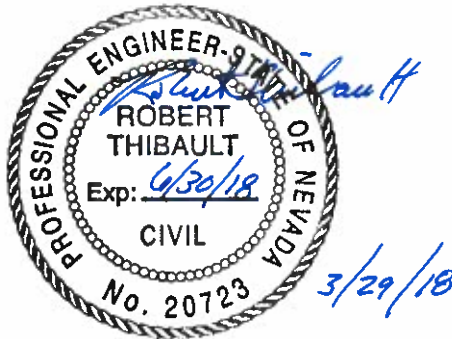
5 – The root zone mix has been removed from the project. The sports fields will be graded to finished grade with native materials in the turf areas.

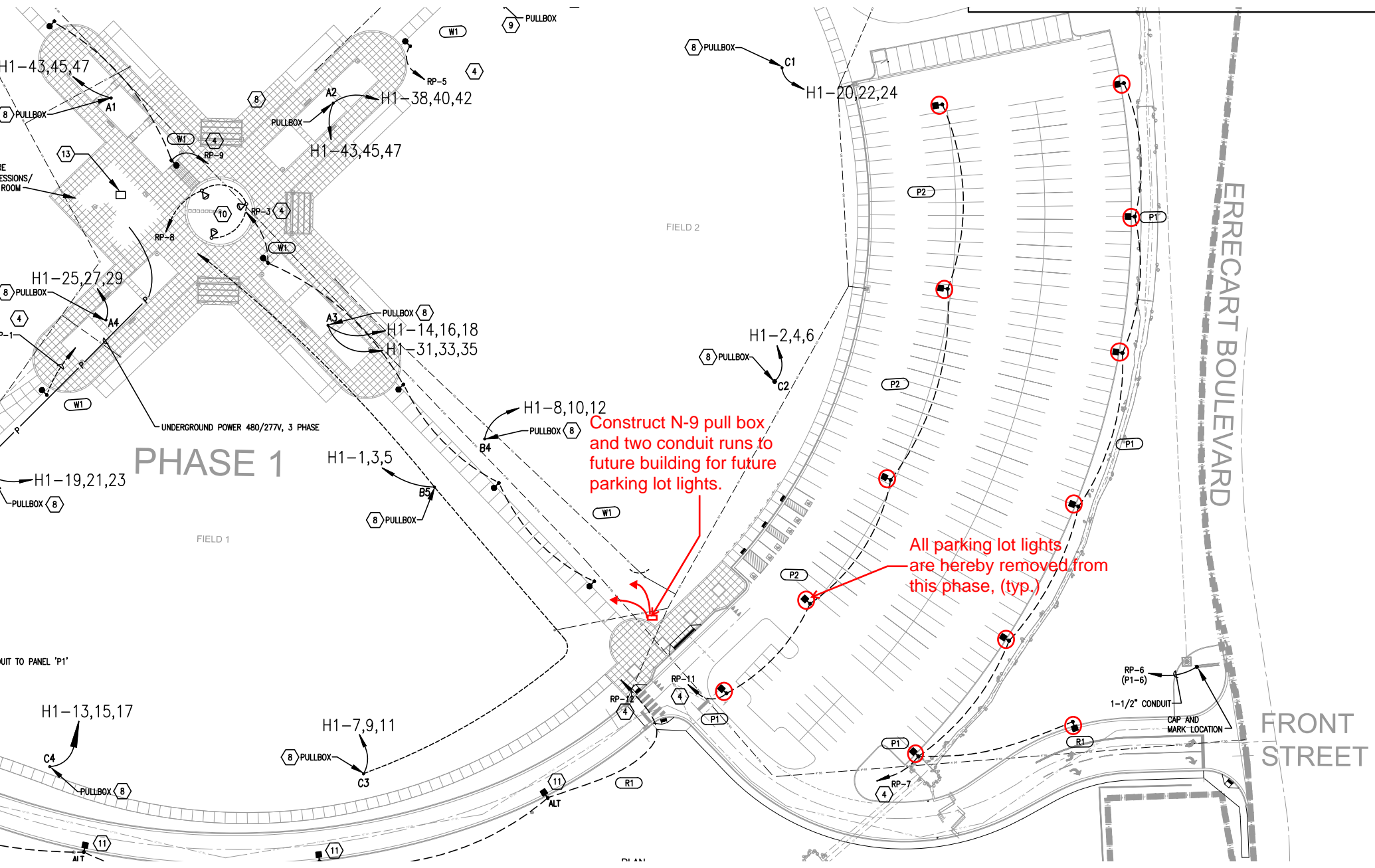
Thank you for your interest in bidding this project.

Sincerely,



Bob Thibault, P.E., P.L.S.
City of Elko
Civil Engineer





Construct N-9 pull box and two conduit runs to future building for future parking lot lights.

All parking lot lights are hereby removed from this phase, (typ.)

Elko Sports Complex
 Second Bid
 Addendum #2
 03/28/18

City of Elko Sports Complex Addendum #2

EXHIBIT 1 –REVISED BID FORM 03/29/18

THIS FORM, FULLY COMPLETED, MUST BE USED FOR ALL BIDS

TO THE CITY OF ELKO, NEVADA:

The undersigned bidder hereby offers, in the amount stated in Exhibit 1 – Bid Form, to furnish all labor, materials, tools, equipment, apparatus, facilities, transportation, incidental items and permits (except as otherwise stated in the Contract Documents) for the construction of the Project, described as follows:

ELKO SPORTS COMPLEX – PHASE 1

The bidder agrees that the work will be performed in accordance with the Contract Documents together with incidental items necessary to complete the work to be constructed in accordance with the Contract, any and all Exhibits to the Contract, Exhibit 16 – Technical Specifications, Exhibit 8 – Project Construction Plans and also in accordance with the *"Standard Specifications and Details for Public Works Construction", 2016 Revised Edition*, and amendments (Orange Book) as adopted by the City of Elko, Nevada.

BASE BID

BID ITEM NO.	ITEM NO.	DESCRIPTION OF WORK	QTY	UNIT	UNIT PRICE	TOTAL
CLEARING / EARTHWORK						
1	337 01200	Mobilization @ _____ _____ per Lump Sum.	1	Lump Sum		
2	City Standard	SWPPP Includes 10' x 10' basin below existing storm water outflow pipe Includes filter fence around soil and fill stockpile areas. @ _____ _____ per Lump Sum.	1	Lump Sum		

3	300.00	Site Clearing Grubbing to be stockpiled on site in future phase area Concrete and other manmade debris to be removed from the site Concrete curb cutting/removal covered in Civil bid schedule Includes clearing wetland/restoration area @ _____ _____ per Acre.	61.12	Acres		
4	31 2316	Topsoil Stripping and Stockpile 6" depth Includes wetland/restoration area Includes future work areas Includes fine grading of landscape areas @ _____ _____ per Acre.	61.12	Acres		
5	31.2316	Topsoil placement Includes wetland/restoration area, future work areas, fine grading of landscape areas, lawn inside and outside of ball fields. @ _____ _____ per Cubic Yard.	19,451	Cubic Yards		
6	303.00	Excavation and Rough Grading Includes wetland & restoration cut (approx. 40,000 yards) Includes stockpile of excess fill material (approx. 20,000 yards) @ _____ _____ per Cubic Yard.	158,702	Cubic Yards		

ELECTRICAL UTILITIES

7	Section E	Electrical Service Connection, Includes transformer and concrete pad, metering gear, conduit and pull boxes from Bullion Road to transformer, and conduit and pull boxes from transformer to building. @ _____ _____ per Lump Sum.	1	Lump Sum		
8	Section E	Parking Lot Lighting Conduit Includes N-9 Junction box and 2 conduit runs with pull strings, to future building for future parking lot lights per Addendum #2. Includes trenching, backfill, compaction @ _____ _____ per Lump Sum.	1	Lump Sum		
9	Section E	(P-1) Parking Lot Lighting Removed from this bid				XXXXXX
10	Section E	(R-1) Roadway Lighting Removed from this bid				XXXXXX

11	Section E	(W-1) Walkway Lighting Includes pole base, conduit, conductor, junction box, and pole, per plan. Includes trenching, backfill, compaction @ _____ _____ per Each.	8	Each		
12	Section E	(R-1) Roadway Lighting (Pole Base Only) Includes pole base, conduit & pull string, junction box Includes trenching, backfill, compaction @ _____ _____ per Each.	4	Each		
13	Section E	Scoreboard Power -Includes conduit, conductor, and junction box -Includes trenching, backfill, compaction @ _____ _____ per Lump Sum.	1	Lump Sum		
14	Section E	Irrigation Pump Station Power Includes conduit, conductor, junction box Includes trenching, backfill, compaction @ _____ _____ per Lump Sum.	1	Lump Sum		
15	Section E	Flagpole Lighting Conduit Includes conduit, pull strings, junction box, No conductor, no fixtures. Includes trenching, backfill, compaction @ _____ _____ per Lump Sum.	1	Lump Sum		
16	Section E	Sports Lighting Components Includes conduit, pull strings, junction boxes, no conductor. Includes trenching, backfill, and compaction. @ _____ _____ per Each.	15	Each		

**SITE CONCRETE / ASPHALT
(EXCLUDING ROADS OR PARKING LOT)**

17	Per Detail	6' Precast Concrete Fence Includes grading, footings for posts and aggregate base @ _____ _____ per Lineal Foot.	1,950	Lineal Feet		
----	------------	--	-------	-------------	--	--

PLANTING AND MULCH (EXCLUDES PLAYING FIELDS)

18	32 9113.16	Rock Mulch in Drain Channel: 3" - 6" Cobble 8" Depth @ _____ _____ per Cubic Yard.	150	Cubic Yards		
----	---------------	--	-----	-------------	--	--

IRRIGATION (EXCLUDES PLAYING FIELDS)

19	32 8423	Water Source to Wetlands 2" PVC pipe and valve @ _____ _____ per Lineal Foot.	700	Lineal Feet		
20	32 8423	Mainline Irrigation Installation Includes connection to pump station, controller, mainline, communication wire, control valves isolation valves, quick coupler valves, and associated equipment as shown on the LI sheets. @ _____ _____ per Lump Sum.	1	Lump Sum		
21		12"Ø reuse water line from point of connection Includes trenching and compaction @ _____ _____ per Lineal Foot.	250	Lineal Feet		
22	Per Detail	Pump Station Includes engineered shop drawings by vendor Includes offloading and set station, 10"Ø inlet stub, connection to 12"Ø reuse line, connection to power stub, start up and testing Includes concrete pad and cabinet as specified @ _____ _____ per Lump Sum.	1	Lump Sum		

WETLAND MITIGATION AND RESTORATION AREA

23	32 9260	Wetland Seed Mix Hydro-mulch @ _____ _____ per Acre.	4.9	Acres		
24	32 9260	Upland Seed Mix Hydro-mulch @ _____ _____ per Acre.	5.1	Acres		
25	32 9260	Transition Seed Mix Hydro-mulch @ _____ _____ per Acre.	1.5	Acres		
26	32 9000	Deciduous Trees: 1" caliper Furnish and install trees per plan and specification @ _____ _____ per Each.	141	Each		

27	32 9000	Shrubs: 1 Gallon Furnish and install shrubs per plan and specification @ _____ _____ per Each.	300	Each		
28	32 9000	Willow Whips Furnish and install willow whips per plan and specification @ _____ _____ per Each.	3,900	Each		
29	32 9000	Sedge and Rush Seedlings Furnish and install wetland seedlings per plan and specification @ _____ _____ per Each.	54,200	Each		

CIVIL WORK

30	303 0100	Grading of 2' Depth Drainage Ditch @ _____ _____ per 100 Feet.	9	STA(100')		
31	303 0200	Grading of 4' Depth Drainage Ditch @ _____ _____ per 100 Feet.	6	STA(100')		
32	306 0001	18" drainage junction structures @ _____ _____ per Each.	1	Each		
33	306 0002	24 " drainage junction structures @ _____ _____ per Each.	7	Each		
34	306 0100	6 inch dia. Corrugated PP N-12 storm drain @ _____ _____ per Lineal Foot.	140	Lineal Feet		
35	306 0200	10 inch dia. Corrugated PP N-12 storm drain pipe @ _____ _____ per Lineal Foot.	245	Lineal Feet		
36	306 0300	12 inch dia. Corrugated PP N-12 storm drain pipe @ _____ _____ per Lineal Foot.	40	Lineal Feet		
37	306 0301	18 " Dia. Corrugated PP N-12 storm drain pipe @ _____ _____ per Lineal Foot.	990	Lineal Feet		
38	306 0400	24" dia. Corrugated PP N-12 Storm drain pipe @ _____ _____ per Lineal Foot.	840	Lineal Feet		
39	306 0500	30" dia. Corrugated PP N-12 storm drain @ _____ _____ per Lineal Foot.	330	Lineal Feet		

40	306 0600	42" dia. Corrugated PP N-12 storm drain @ _____ _____ per Lineal Foot.	950	Lineal Feet		
41	306 0700	48 " dia. Corrugated PP N-12 storm drain @ _____ _____ per Lineal Foot.	540	Lineal Feet		
42	306 0800	Concession & field drainage inlets @ _____ _____ per Each.	6	Each		
43	305 0100	Grading Fill – Berms @ _____ _____ per Cubic Yard.	30	Cubic Yards		
44	305 0200	Rock Riprap inlet and outlet Protection @ _____ _____ per Square Yard.	130	Square Yards		
45	305 0300	Grouted Rip Rap @ _____ _____ per Square Yard.	300	Square Yards		
46	323 0200	Type 4R drainage inlet @ _____ _____ per Each.	4	Each		
47	323 0300	60" dia. Storm Drain Manholes @ _____ _____ per Each.	5	Each		
48	323 0400	48" dia. Sanitary Sewer Manholes @ _____ _____ per Each.	7	Each		
49	306 0700	12" dia. PVC SDR-35 Sanitary Sewer Pipe @ _____ _____ per Lineal Foot.	2,035	Lineal Feet		
50	306 0800	8" dia. PVC SDR-35 Sanitary Sewer Service Pipe @ _____ _____ per Lineal Foot.	50	Lineal Feet		
51	307 0100	12" AWWA C900 Class 150 SDR 18 PVC Pressure Pipe @ _____ _____ per Lineal Foot.	2,115	Lineal Feet		
52	307 0200	Cut 12 " line, cap 12" line & remove valve box @ _____ _____ per Lump Sum.	1	Lump Sum		
53	307 0600	2" Backflow Prevention Assembly @ _____ _____ per Each.	1	Each		
54	307 1000	2" ips, 200 psi Poly Water Service Line (includes tap) @ _____ _____ per Lineal Foot.	460	Lineal Feet		
55	307 1100	6" AWWA C900 Fire Service Line @ _____ _____ per Lineal Foot.	50	Lineal Feet		

56	307 1200	Fire Hydrant Assembly (includes 1 6" GV) @ _____ _____ per Each.	2	Each		
57	307 1300	Special Construction Utility crossing(s) @ _____ _____ per Each.	8	Each		
58		Remove and dispose of 12" diameter water main @ _____ _____ per Lineal foot.	1,000	Lineal Feet		
59		Construct 5'x5' drainage structure as shown on sheet C-10 and detail 4 on sheet C-24 @ _____ _____ per Each.	1	Each		

TOTAL BASE BID AMOUNT (BID ITEMS NO. 1 – NO. 59) IN NUMBERS =

\$ _____

TOTAL BASE BID AMOUNT (BID ITEMS NO. 1 – NO. 59) IN WRITTEN FORM =

ADDITIVE ALTERNATE #1

BID ITEM NO.	ITEM NO.	DESCRIPTION OF WORK	QTY	UNIT	UNIT PRICE	TOTAL
1	Sports Light Plans	Sports Light poles and precast pole bases (owner provided poles and control equipment) -Install per light pole provider specifications @ _____ _____ per Each.	15	Each		

**TOTAL ADDITIVE ALTERNATE #1 AMOUNT (BID ITEMS NO. 1 – NO. 1) IN
NUMBERS = \$ _____**

**TOTAL ADDITIVE ALTERNATE #1 AMOUNT (BID ITEMS NO. 1 – NO. 1) IN WRITTEN
FORM = _____**

ADDITIVE ALTERNATE #2

BID ITEM NO.	ITEM NO.	DESCRIPTION OF WORK	QTY	UNIT	UNIT PRICE	TOTAL
1	Section E	Sports Field Lighting (wire only) -Includes installation of conductor for sports light fixtures @ _____ _____ per Lump Sum.	1	Lump Sum		

TOTAL ADDITIVE ALTERNATE #2 AMOUNT (BID ITEMS NO. 1 – NO. 1) IN NUMBERS = \$ _____

TOTAL ADDITIVE ALTERNATE #2 AMOUNT (BID ITEMS NO. 1 – NO. 1) IN WRITTEN FORM = _____

ADDITIVE ALTERNATE #3

2 ~ 325' PLAYING FIELDS (NATURAL GRASS)

BID ITEM NO.	ITEM NO.	DESCRIPTION OF WORK	QTY	UNIT	UNIT PRICE	TOTAL
1	Section C	Fine grading @ _____ _____ per Square Foot.	102,465	Square Feet		
2	Section C	Infield Mix Compacted, in place. Includes fine grading of subgrade @ _____ _____ per Square Foot.	47,173	Square Feet		
3	Section C	Warning Track Mix Compacted, in place @ _____ _____ per Square Foot.	27,808	Square Feet		
4	Section C	Dugout Includes fencing, roof, concrete pad, bench, and associated equipment @ _____ _____ per Each.	4	Each		
5	Section C	Bullpen Mound @ _____ _____ per Each.	4	Each		
6	Section C	Irrigation Includes field mainlines, control valves, communication wire, isolation valves, laterals, heads, and associated equipment as shown on the SR sheets @ _____ _____ per Square Foot.	64,585	Square Feet		

7	Section C	Backstop Fencing Per detail 1, sheet SR 609 @ _____ _____ per Each.	2	Each		
8	Section C	Sports Equipment Includes bases, base anchors, home plates, and foul poles. (pitching mounds are owner provided) @ _____ _____ per field.	2	Fields		
9	Section C	Bullpen Fencing Includes all fencing from the dugout to the far end of the bullpen, per detail 1, sheet SR 608. @ _____ _____ per Each.	4	Each		

TOTAL ADDITIVE ALTERNATE #3 AMOUNT (BID ITEMS NO. 1 – NO. 9) IN NUMBERS = \$ _____

TOTAL ADDITIVE ALTERNATE #3 AMOUNT (BID ITEMS NO. 1 – NO. 9) IN WRITTEN FORM = _____

ADDITIVE ALTERNATE #4

1 ~ 250' PLAYING FIELD (NATURAL GRASS)

BID ITEM NO.	ITEM NO.	DESCRIPTION OF WORK	QTY	UNIT	UNIT PRICE	TOTAL
1	Section C	Fine grading @ _____ _____ per Square Foot.	63,855	Square Feet		
2	Section C	Infield Mix Compacted, in place @ _____ _____ per Square Foot.	13,842	Square Feet		
3	Section C	Warning Track Mix Compacted, in place @ _____ _____ per Square Foot.	9,142	Square Feet		
4	Section C	Dugout Includes fencing, roof, concrete pad, bench, and associated equipment @ _____ _____ per Each.	2	Each		

5	Section C	Irrigation Includes field mainlines, control valves, communication wire, isolation valves, laterals, heads, and associated equipment as shown on the SR sheets @ _____ _____ per Square Foot.	40,871	Square Feet		
6	Section C	Bullpen Mound @ _____ _____ per Each.	2	Each		
7	Section C	Sports Equipment Includes bases, base anchors, home plates, and foul poles (pitching mounds are owner provided) @ _____ _____ per field.	1	Field		
8	Section C	Backstop Fencing Per detail 1, sheet SR 609 @ _____ _____ per Lump Sum.	1	Lump Sum		

**TOTAL ADDITIVE ALTERNATE #4 AMOUNT (BID ITEMS NO. 1 – NO. 8) IN
NUMBERS = \$ _____**

**TOTAL ADDITIVE ALTERNATE #4 AMOUNT (BID ITEMS NO. 1 – NO. 8) IN WRITTEN
FORM = _____**
