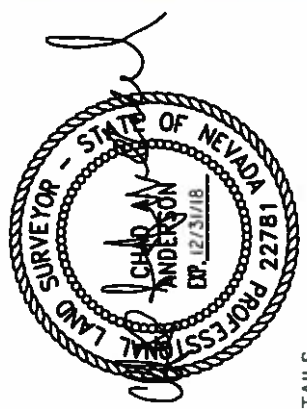




SURVEYOR'S CERTIFICATE

I, CHAD ALLEN ANDERSON, DO HEREBY CERTIFY THAT I AM A PROFESSIONAL LAND SURVEYOR AND THAT I HOLD LICENSE NO. 22781, AS PRESCRIBED UNDER THE LAWS OF THE STATE OF NEVADA. I HEREBY CERTIFY THAT I HAVE MADE A SURVEY OF THE HEREON DESCRIBED PARCEL AND THAT THIS ANNEXATION PLAT IS A TRUE AND CORRECT REPRESENTATION OF SAID PROPERTY AS IT RELATES TO THE CURRENT CITY BOUNDARY.



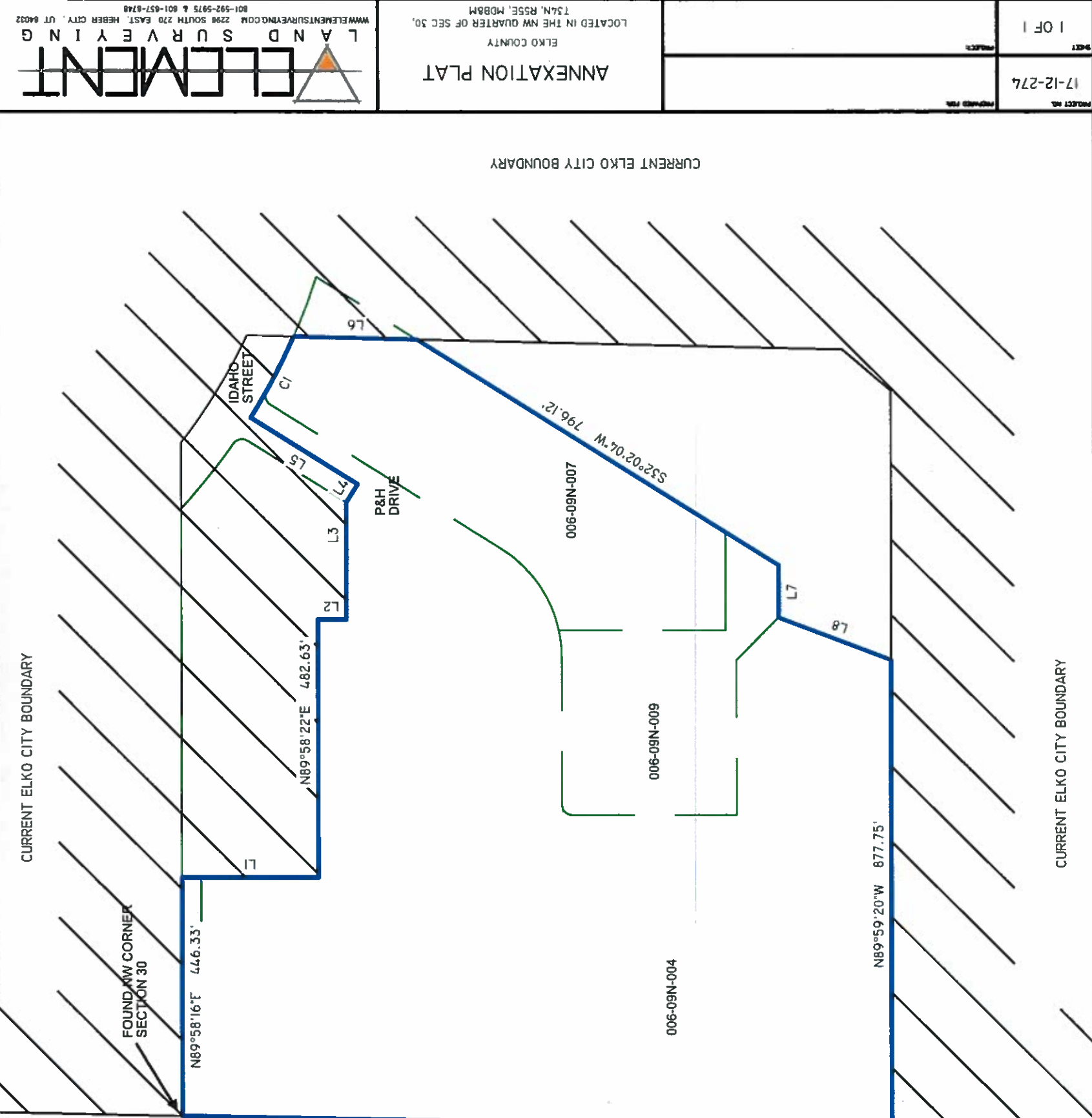
Chad Anderson
 CHAD A ANDERSON
 DATE 03/05/18

ANNEXATION DETAILS

PROPOSED ACREAGE TO BE ANNEXED = 32.74 ACRES
 LENGTH OF COMMON BOUNDARY WITH THE CORPORATE LIMITS OF THE CITY = 3,011 FEET
 PERCENTAGE OF COMMON BOUNDARY WITH THE CORPORATE LIMITS OF THE CITY = 55%

LINE TABLE	
LINE	DIRECTION
L1	S00°01'36"E
L2	S00°01'38"E
L3	N89°58'22"E
L4	S57°57'49"E
L5	N32°02'04"E
L6	S01°19'23"W
L7	S89°58'22"W
L8	S20°44'31"W

CURVE TABLE						
CURVE	LENGTH	RADIUS	DELTA	CHORD	BEARING	TANGENT
C1	171.94'	1160.00'	8°29'33"	171.78'	S62°13'10"E	86.13'



ELEMENT
 LAND SURVEYING
 2298 SOUTH 270 EAST, HEBER CITY, UT 84002
 801-592-5975 & 801-457-8748
 WWW.ELEMENTSURVEYING.COM

ANNEXATION PLAT
 ELKO COUNTY
 LOCATED IN THE NW QUARTER OF SEC 30,
 T34N, R55E, M08B0M

PROJECT NO. 17-12-274
 SHEET 1 OF 1

VII.B